



500 ECO

TREATMENT CHAIR



E

2024 V03

ENJOY QUALITY AND DESIGN

500 ECO



Item No.: 1500 0008

Perfect for I.V.I. treatments. Direct power connection and the integrated power supply unit enable the more powerful operation with high adjustment speed.

Out of the box
solution

DIRECT POWER CONNECTION



Positioning

Efficient, comfortable and fast!



Entering



Patient positioning



5 - 6 SEC
IN OR-POSITION

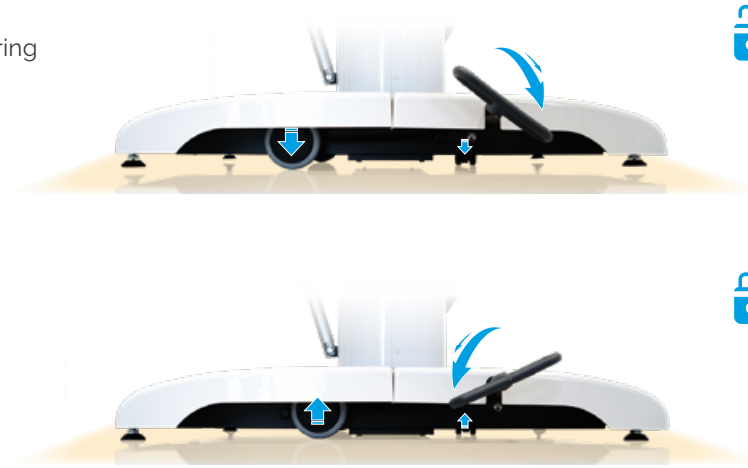
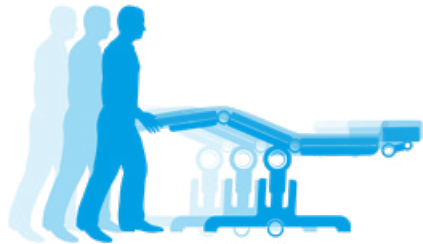


Surgery position

Sturdy base with mono lifting column

Stability/maneuvering aid

Sturdy stand with three extendable castors combines high stability with simple maneuvering aid (in the event of a change of a location).



Precise positioning of the head part

Headrest

Mechanical adjustment options for comfortable and fine-tuned positioning of the patient's head, adapted to his individual body dimensions.



Positioning by hand control

Multi-functional manual keypad



Reset button



CPR button



AUTO Auto run function



MEMORY 8 free configurable memory positions



Positioning by foot control

Optional: foot switch

Foot keypad to activate the two free configurable memory positions 1 and 2 of hand control. See page 48.

Item No.: 3351 1029



Technical specifications



Chassis

- Outside length 910 mm
- Outside width incl. foot pedal 600 mm
- Outside width incl. arm rests 845 mm
- White paint finish
- 2 fixed castors (rigid) \varnothing 100 mm
- 1 swivel castor \varnothing 35 mm
- Optional: foot keypad (2 memory positions, M1/M2)

Upper frame

- 4-part support frame (head, back, seat, leg part)
- Length 1,950 – 2,230 mm
- Width of upholstery 600 mm
- Entry height 550 mm
- Removeable upholstery

	Angle	Dimensions (LxW)
• Head part	-27°/+180°	280 x 420 mm
• Back part	-23°/+85°	710 x 600 mm
• Seat part	-3°/+28°	510 x 600 mm
• Leg part	0°/-75°	490 x 530 mm
• Height adjustment		615 – 890 mm
• Armrests	0°/+180°	455 x 75 mm
• Legroom surgeon		485 – 760 mm
• CPR/flatposition		(height back part) 600 mm

Electrical control

- All components according to IP54
- Hand control with 8 individually programmable memory positions, auto run function, reset button
- Foot keypad (optional)

Electric Drives

- Back, seat, leg part, total up/down

Lifting column

- Max. lifting 275 mm
- Max. load 240 kg
- Motors IPX4 with HAL sensors, to be memorized

Seat part/CPR



Back part/leg part



Height adjustment/legroom



Application example

assistTrend + armrest pair Item No.: 2500 0002
 + Item No.: 3300 0000

500 *ECO* Item No.: 1500 0008



Further technical details

- Chair has detachable, swiveling armrests made completely with PUR foam
- Detachable seat for service friendly access to electric components

Max. load 240 kg

Weight 90 kg

Subject to technical modifications.

Equipment protection

Paper rolls *stayClean roll*

White embossed, 2-ply, 50 cm x 50 m
 Carton à 9 pieces

Item No.: 3034 0021

Page 104



Upholstery/color card

Standard color

anthracite (main color)
 + chrome (accent color)
 Item No.: 3037 0092

„skai® Tundra“
 on page 96

„skai® Pandoria Plus“
 on page 97



Components



FUNCTIONAL
CLASS



500 ECO

Item No.: 1500 0008



Multifunctional headrest

Item No.: 3351 1034



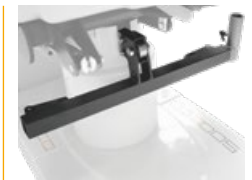
Foot keypad to activate the two free configurable memory positions 1 and 2 of hand control

Item No.: 3351 1029



Paper roll holder

Item No.: 3351 1031



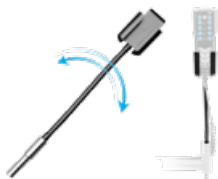
Component mounting support, powder coated with component holder stainless steel

Item No.: 3351 1033



Component holder, stainless steel (component mounting support 3351 1033 not included)

Item No.: 3351 0037



Hand control holder, PVC (component mounting support 3351 1033 not included)

Item No.: 3351 1023



Component arm stainless steel, swiveling, incl. extendible I.V. Pole \varnothing 25 mm (component mounting support 3351 1033 not included)

Item No.: 3024 0014



I.V. Pole stainless steel \varnothing 25/18 mm, one-hand height adjustable 1,070 – 1,660 mm, 4 hooks, max. 2 kg/hook, glass and holder (component mounting support 3351 1033 and component holder not included)

Item No.: 3068 0000



Hand control holder for attachment onto an I.V. Pole \varnothing 25/18 mm, PVC

Item No.: 3351 1022

Medical device



Instrument table *supportLine* height adjustable 730 – 1,000 mm

Item No.: 3351 0026



Side rails right and left, swiveling incl. locking, upholstered

Item No.: 3351 1036



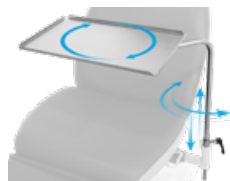
Anesthesia arm board with universal joint, with wrist secure straps

Item No.: 3078 0000



Norm rail 300 mm, seat part

Item No.: 3321 0000



Instrument table 500x300x15 mm, height adjustable, swiveling, detachable, incl. adapter (component mounting support 3351 1033 not included)

Item No.: 3065 0000



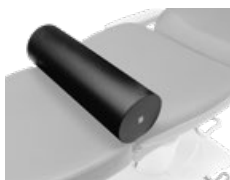
Foot protection foil

Item No.: 3326 0000



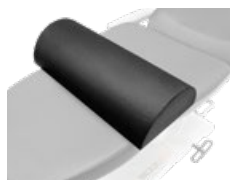
Trapeze cushion, wedge, for back/seat part

Item No.: 3022 0005



Knee roll round, 500x150 mm, PUD-coated

Item No.: 3050 0000



Knee half roll, 600x280x140 mm, PUD-coated

Item No.: 3019 0000



Body strap with Velcro straps, 2-piece

Item No.: 3083 0000



Inlay head pillow

Item No.: 3325 0000

Color cards



Customize the upholstery of your products to color-coordinate them with your workplace environment.

To do this, select one or two colors (main and accent color - as with the 500 **XLE** *comfort* and 500 **ECO**) from one of the following color cards.



Application example *motionLine-E*

The colors displayed on your device may differ slightly from the original colors. If you wish to receive original color charts, please contact us at info@ufsk-osys.com.

Example: standard version

- Main color:**
anthrazit F6461197
Item No.: 3037 0052
- Accent color:**
chrom F6461205
Item No.: 3037 0056



500 XLE comfort

Item No.: 1500 0006
+ 3037 0080

Examples of color combinations

- schoko F6461357**
Item No.: 3037 0060
- feuer F6461454**
Item No.: 3037 0063



- safran F6461542**
Item No.: 3037 0069
- schoko F6461357**
Item No.: 3037 0060



- atoll F6461453**
Item No.: 3037 0062
- weiß F6461198**
Item No.: 3037 0134



Color card
skai® Tundra



High quality skai® material with fine calf leather grain and subdued matte-gloss-effect. The very extensive and trend-orientated color spectrum enables many applications and combinations.

Product Specification

- Long-lasting
- Tear resistant
- Easy to clean
- Abrasion resistant (DIN EN ISO 6570-2)
- Lightfast
- Disinfectant resistant
- Biocompatibility: cytotoxicity (EN ISO 10 993-5) and epicutaneous test (EN ISO 10 993-10)
- Blood- and urine resistant
- Phthalate-free
- Vegan

<i>eyeForce</i>	1800 0000
<i>500 XLE</i>	1500 0006
<i>500 XLE comfort</i>	1500 0006
	+ 3037 0080
<i>500 XLS</i>	1500 0005
<i>500 ECO</i>	1500 0008
<i>400 XL</i>	1400 0001
<i>surgiForce</i>	Formed seat 2600 0008
<i>surgiForce light</i>	Formed seat 2600 0009
<i>surgiLine</i>	Formed seat 2200 0008
<i>assistLine</i>	2400 0015
<i>motionLine</i>	1700 0000
<i>motionLine-E</i>	1700 0001

+ Item No.: 3037 0...

weiß F6461198 Item No.:134	creme F6461210 Item No.:057	beige F6461636 Item No.:094	sand F6461230 Item No.:058	pistazio F6461610 Item No.:153	mint F6461495 Item No.:067	aqua F6461456 Item No.:001	türkis F6461338 Item No.:008
perle F6461288 Item No.:007	silber F6461550 Item No.:070	stone F6461608 Item No.:075	bleu F6461496 Item No.:068	dolphin F6461609 Item No.:076	sky F6461581 Item No.:073	royal F6461196 Item No.:051	atoll F6461453 Item No.:062
violett F6461356 Item No.:059	cyclame F6461381 Item No.:119	orchidee F6461354 Item No.:011	bordeaux F6461350 Item No.:010	kirsche F6461199 Item No.:054	feuer F6461454 Item No.:063	karneol F6461557 Item No.:072	orange F6461556 Item No.:071
apricot F6461458 Item No.:066	mais F6461457 Item No.:065	mango F6461607 Item No.:074	safran F6461542 Item No.:069	limonade F6461343 Item No.:009	limone F6461543 Item No.:109	smaragd F6461455 Item No.:064	agave F6461273 Item No.:006
chrom F6461205 Item No.:056	ocean F6461204 Item No.:055	schoko F6461357 Item No.:060	schwarz F6461195 Item No.:050	anthrazit F6461197 Item No.:052			

The colors displayed on your device may differ slightly from the original colors. If you wish to receive original color charts, please contact us at info@ufsk-osys.com.

Color card

skai® Pandoria Plus



skai® Pandoria Plus is a high-quality upholstery material, whose fine micropore structure gives a certain unobtrusiveness, which is refined by an attractive tone-in-tone effect. The very pleasant feel of the material and the excellent material characteristic and the broad, modern color spectrum make skai® Pandoria Plus universally usable.

Product Specification

- Long-lasting
- Tear resistant
- Easy to clean
- Abrasion resistant (DIN EN ISO 5470-2)
- Resistant to oil and fat
- Lightfast
- Disinfectant resistant
- Flame protection
- Biocompatibility: cytotoxicity (EN ISO 10 993-5) and epicutaneous test (EN ISO 10 993-10)
- Resistant to sudor, blood and urine
- Antibacterial according to JIS Z 2801
- Vegan

<i>eyeForce</i>		1800 0000
<i>500 XLE</i>		1500 0006
<i>500 XLE comfort</i>		1500 0006
		+ 3037 0080
<i>500 XLS</i>		1500 0005
<i>500 ECO</i>		1500 0008
<i>400 XL</i>		1400 0001
<i>surgiForce</i>	Formed seat	2600 0008
<i>surgiForce light</i>	Formed seat	2600 0009
<i>surgiLine</i>	Formed seat	2200 0008
<i>assistLine</i>		2400 0015
<i>motionLine</i>		1700 0000
<i>motionLine-E</i>		1700 0001

+ Item No.: 3037 0136

+ Item No.: 3037 0...

weiß F6413046 Item No.:053	hellbeige F6413047 Item No.:141	kiesel F6413048 Item No.:158	birke F6413049 Item No.:159	smoke F6413050 Item No.:221
silbergrau F6413075 Item No.:275	platin F6413053 Item No.:161	anthrazit F6413076 Item No.:276	schwarz F6413052 Item No.:170	schoko F6413051 Item No.:160
gletscher F6413055 Item No.:162	sky F6413074 Item No.:277	royal F6413056 Item No.:163	smaragd F6413073 Item No.:278	kaktus F6413077 Item No.:281
feuer F6413058 Item No.:166	kirsche F6413079 Item No.:279	fuchsia F6413078 Item No.:280	mais F6413057 Item No.:164	limone F6413054 Item No.:165

The colors displayed on your device may differ slightly from the original colors. If you wish to receive original color charts, please contact us at info@ufsk-osys.com.

Upgrade your OR to perfection.



eyeForce



500 XLE



500 XLE comfort



500 XLS



500 ECO



400 XL



motionLine



motionLine-E



surgiForce



surgiForce light



surgiTrend



surgiLine



stayClean



stayClean roll



stayClean kick bucket



stayClean collector



assistTrend



assistPro F



assistPro H



easyPro F



easyPro R



easyLine F



easyLine R



assistLine



supportLine

CONTACT US



UFSK
INTERNATIONAL

OSYS

UFSK-International OSYS GmbH
Kirchhoffstraße 1
93055 Regensburg
Germany

Tel. +49 (0) 941 78862 15
Fax +49 (0) 941 78862 35
E-Mail info@ufsk-osys.com
Web ufsk-osys.com

MADE IN GERMANY
Design | Construction | Manufacturing