

ZEN Knee – Tibia modular mobile bearing & fixed bearing



BEST QUALITY
MADE IN GERMANY

ZEN KNEE – TIBIA MODULAR MOBILE BEARING & FIXED BEARING

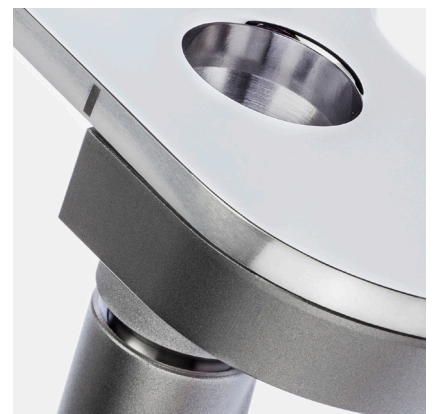
For a cemented treatment

ZEN Tibia Modular increases the range of application of the proven ZEN Knee system. The modular ZEN tibial components are designed for use in primary and revision surgeries of patients in whom secure fixation of the standard tibial implants is no longer ensured due to insufficient bone quality or minor bone loss of the proximal tibia.

The aim is to restore the anatomical alignment and functional stability of the knee joint and of the joint line. The modular ZEN tibial system for cemented fixation offers a range of treatment options thanks to a selection of stem extensions and augments. The augments are used to fill and compensate smaller bone defects. The tibial plateau and the stem extension are attached to one another via a fixed cone screw connection which

is securely fastened with a torque screwdriver. Stem extensions are supplied as straight and as offset versions, which allows for optimal treatment of the varying anatomical requirements of patients.

The stem screw is supplied with the tibial plateau. The tibial plateau is manufactured using CoCrMo casting alloy (ISO 5832-4). It is also available as a variant with titanium-niobium-nitride coating, that has a less allergenic potential. The stem extensions as well as the augments and stem screw are manufactured using Ti6Al4V forge alloy in accordance with ISO 5832-3. The centralizer is made using UHMWPE (ISO 5834-2).



PRODUCT DESCRIPTION

- **Sizes:**
5 sizes
- **Anchoring:**
cemented
- **Components & Material:**
 - Tibia mobile bearing (mb)**
CoCrMo (ISO 5832-4)
opt. with TiNbn coating
 - Tibia fixed bearing (fb)**
CoCrMo (ISO 5832-4)
opt. with TiNbn coating

Following components are identical for either mb or fb version:

- Stem extension**
Ti6Al4V (ISO 5832-3)
- Centralizer**
UHMWPE (ISO 5834-2)
- Augment**
Ti6Al4V (ISO 5832-3)

INSTRUMENTS

We have developed a compact instrument set, that complements the ZEN mobile- and ZEN fixed bearing sets, to perform a safe revision treatment. Both Tibia Modular versions, mobile bearing and fixed bearing, can be implanted with the same instrument set.

In addition the instruments are equipped with a modern, ergonomically shaped silicone handle system which meets all cleaning and sterilization requirements. The set can be supplied in our Monolite tray. The instrument trays are crafted out of a single piece from high-quality stainless steel. The system is characterized by its light weight and can be stacked as desired.

