



surgiForce

SURGEON'S CHAIR



E

2024 V03

ENJOY QUALITY AND DESIGN

surgiForce



Item No.: 2600 0004 with Comfort seat
Item No.: 2600 0008 with Formed seat (Illustration)

That is high tech and high precision.

The ultimate surgeon's chair for microsurgery.

Sophisticated engineering, design and function down to the smallest detail. The variety of adjustment functions of its armrests is impressive: rotating, tilting and swiveling - every movement of the surgeon's arm is supported with ease! Ultra-precise navigation within the operating field, sterile operation, and a comfortable, non-fatiguing work environment - for a work flow worthy of being rated "Premium de Luxe".



MED.TEC at its highest level

Double castors

The five high-grade double castors are smooth-running and rotated by 360 degrees. This means no-limits mobility, especially in confined operating room spaces. *surgiForce's* central front castor in particular gives extra stability to keep the treating surgeons safely in place whenever they shift their bodyweight forward.



Chassis

The drive mechanism's base is made of cast aluminum. This means maximum stability and longevity and no-limits mobility. The material and workmanship meet the strictest sanitary requirements.



Plastic cover panels

The high-shine plastic cover panels with their scratch-resistant and impact-modified surface finish are extremely hygienic and easy to disinfect.



Armrests with "de luxe" feature

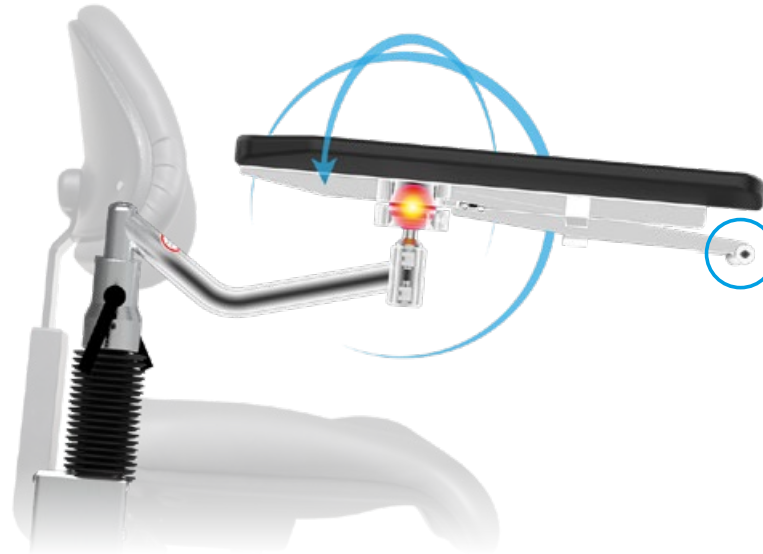


3D freedom of movement

High-precision, maintenance-free ball joint for full 360-degree range armrest movements around all axes. Ultra-lightweight guide system for fast, efficient and vibration-proof adjustment of individual underarm positions.

Need to readjust *surgiForce* while maintaining sterile conditions? Not a problem! In addition to the foot keypad, *surgiForce* features so-called "one-hand triggers" underneath the armrests. Lift them briefly to adjust the height!

Angled armrest support for increased freedom of armrest movement around the lateral axis.



Armrests

Made of molded PUR foam - pleasant to the touch, no slick leatherette cover - for guaranteed secure hold. Suitable for disinfectants.



Linear guides

To give you that extra margin of flexibility: Armrests with linear guides! Applying pressure with your forearm will make the arms "glide" effortlessly in longitudinal direction while letting go will stop them by self-locking mechanism - available as an option. See on page 72.

Item No.: 3351 1008



Multi-function unit

Sterile actuation by foot

To activate the multi-function unit, tap it with your foot. It allows you to easily adjust the height of the seat (black pedal) and the armrests (gray pedal) independently of each other.

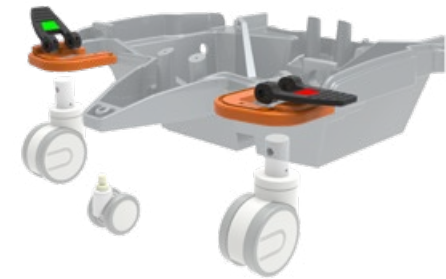
Intuitive foot keypad operation of the multi-function unit for powered seat height and armrest adjustment. Activation is signaled by acoustic and visual signals.

Abrasion-resistant corner guards (orange) made of synthetic rubber take the stress out of maneuvering *surgiForce* even at close quarters to other medical equipment.



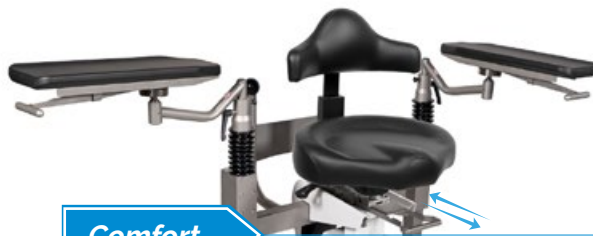
Braking system

The easy-to-reach and easy-to-use central brake acts on all four double castors to keep the *surgiForce* safely and reliably in the desired position.



Seating systems with sliding carriage

PREMIUM
LINE



Comfort

The seating system Comfort: With mechanical individual adjustment functions. For a correct, back-friendly sitting and working posture, the seat surface or the seat depth can be adjusted by a sliding mechanism located underneath the seat.



Seat angle adjustment

Back angle adjustment

Back height adjustment



Formed seat

The form seating system: With enlarged contact surface for more comfort and optimum weight distribution. The seat surface can be individually tilted forward and fixed together with the backrest. In addition, angle and height adjustment of the backrest ensure an ideal sitting posture.

Seat angle adjustment

Back angle adjustment

Back height adjustment



Upholstery/color card

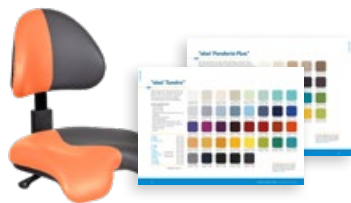
Standard color
black
Item No.: 3037 0235



„PeriLine“ on page 99

Comfort

Standard color
anthracite
Item No.: 3037 0052



„skai® Tundra“ on page 96
„skai® Pandora Plus“ on page 97

Formed seat

Mains-free operation

Accumulators

The charger-battery-control unit integrated in the drive mechanism permits mains-free operation at protective low voltage. Splash-protected charging socket on the bottom of the drive mechanism.



WITH PRODUCT UPGRADE

A **lifting column shortened** by 30 mm for a lower entry and seat height for the surgeon.

Technical specifications

Lifting column

- Lifting height of the seat 170 mm
- Lifting height of the armrests 125 mm
- Electromotive adjustment via the foot control elements

Dimensions maximum (LxWxH) incl. armrests

- with Comfort seat 860x750x1,140 mm
- with Formed seat 860x750x1,220 mm

Chassis

- Castors \varnothing 100 mm
- 5th castor \varnothing 65 mm
- Central brake acting on all four castors
- Emergency stop button

Battery unit

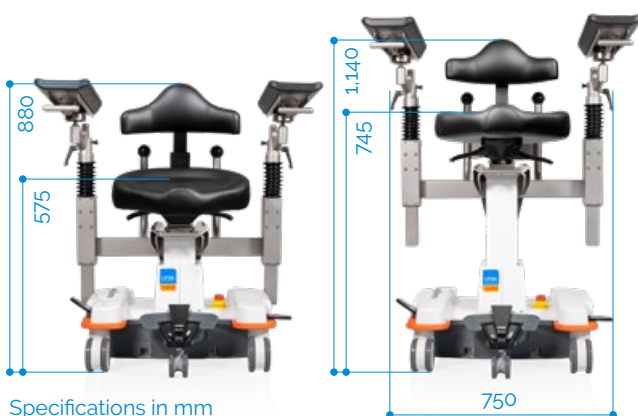
- Lead-gel battery, 2 pcs. 12 V, 2.9 A
- Universal battery charger: Input: 100 – 240 V
Output: 24 V

Technical dimensions

Seating system Comfort

Minimum

Maximum



Seating system Formed seat

Minimum

Maximum



Seating systems:

Comfort | Formed seat

- Min. sitting height 575 mm | 570 mm
- Max. sitting height 745 mm | 740 mm
- Seat adjustment mechanism 120 mm | 120 mm
- Seat angle adjustment $-9^{\circ}/+3^{\circ}$ | -11°
- Back angle adjustment $-21^{\circ}/+2^{\circ}$ | $-25^{\circ}/+2^{\circ}$

Weight

74 kg

Max. load

150 kg

Subject to technical modifications.

Components



surgiForce
Formed seat Item No.: 2600 0008

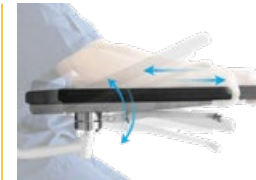


surgiForce
Comfort seat Item No.: 2600 0004



Foot release for sliding carriage,
for sterile adjustment of the sliding carriage

Item No.: 3351 1042



Armrest pair with
linear guide and
one-hand release,
factory-fitted

Item No.: 3351 1008



Armrest pair with
one-hand release for
neurosurgery (angular),
retrofit kit

Item No.: 3351 1010



Footswitch plate
429x820 mm, height 53 mm

Item No.: 3317 0000



Footswitch plate
429x690 mm, height 53 mm

Item No.: 3351 1041

Color card
skai® Tundra



High quality skai® material with fine calf leather grain and subdued matte-gloss-effect. The very extensive and trend-orientated color spectrum enables many applications and combinations.

Product Specification

- Long-lasting
- Tear resistant
- Easy to clean
- Abrasion resistant (DIN EN ISO 6570-2)
- Lightfast
- Disinfectant resistant
- Biocompatibility: cytotoxicity (EN ISO 10 993-5) and epicutaneous test (EN ISO 10 993-10)
- Blood- and urine resistant
- Phthalate-free
- Vegan

<i>eyeForce</i>		1800 0000
<i>500 XLE</i>		1500 0006
<i>500 XLE comfort</i>		1500 0006
		+ 3037 0080
<i>500 XLS</i>		1500 0005
<i>500 ECO</i>		1500 0008
<i>400 XL</i>		1400 0001
<i>surgiForce</i>	Formed seat	2600 0008
<i>surgiForce light</i>	Formed seat	2600 0009
<i>surgiLine</i>	Formed seat	2200 0008
<i>assistLine</i>		2400 0015
<i>motionLine</i>		1700 0000
<i>motionLine-E</i>		1700 0001

+ Item No.: 3037 0...

weiß F6461198 Item No.:134	creme F6461210 Item No.:057	beige F6461636 Item No.:094	sand F6461230 Item No.:058	pistazio F6461610 Item No.:153	mint F6461495 Item No.:067	aqua F6461456 Item No.:001	türkis F6461338 Item No.:008
perle F6461288 Item No.:007	silber F6461550 Item No.:070	stone F6461608 Item No.:075	bleu F6461496 Item No.:068	dolphin F6461609 Item No.:076	sky F6461581 Item No.:073	royal F6461196 Item No.:051	atoll F6461453 Item No.:062
violett F6461356 Item No.:059	cyclame F6461381 Item No.:119	orchidee F6461354 Item No.:011	bordeaux F6461350 Item No.:010	kirsche F6461199 Item No.:054	feuer F6461454 Item No.:063	karneol F6461557 Item No.:072	orange F6461556 Item No.:071
apricot F6461458 Item No.:066	mais F6461457 Item No.:065	mango F6461607 Item No.:074	safran F6461542 Item No.:069	limonade F6461343 Item No.:009	limone F6461543 Item No.:109	smaragd F6461455 Item No.:064	agave F6461273 Item No.:006
chrom F6461205 Item No.:056	ocean F6461204 Item No.:055	schoko F6461357 Item No.:060	schwarz F6461195 Item No.:050	anthrazit F6461197 Item No.:052			

The colors displayed on your device may differ slightly from the original colors. If you wish to receive original color charts, please contact us at info@ufsk-osys.com.

Color card

skai® Pandoria Plus



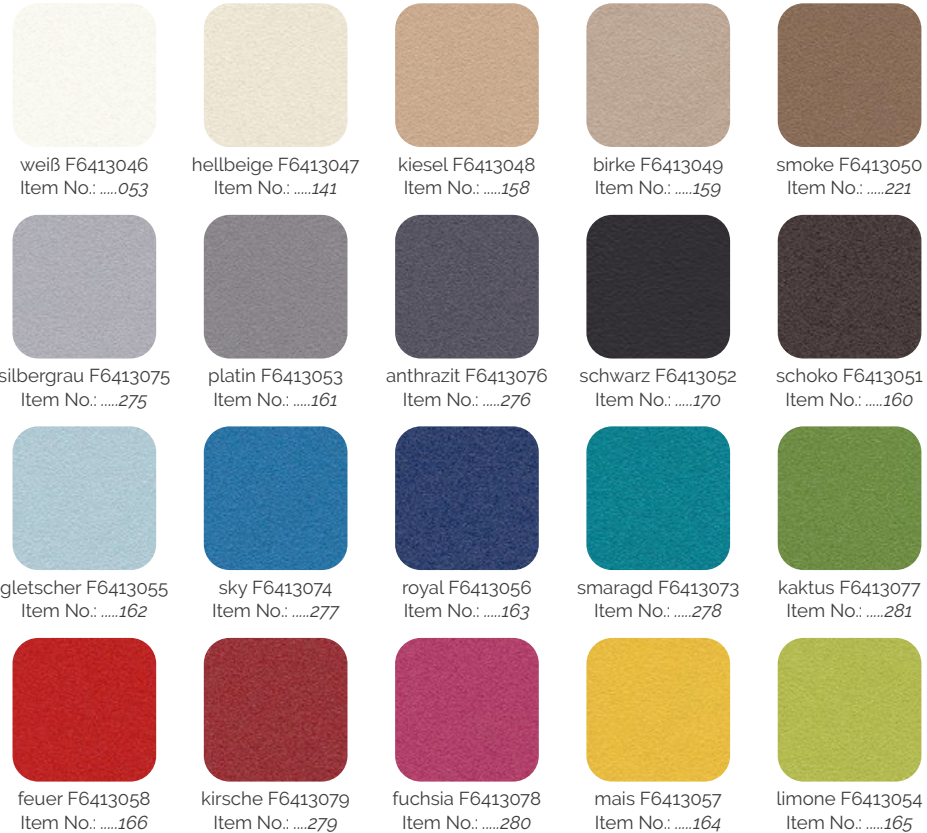
skai® Pandoria Plus is a high-quality upholstery material, whose fine micropore structure gives a certain unobtrusiveness, which is refined by an attractive tone-in-tone effect. The very pleasant feel of the material and the excellent material characteristic and the broad, modern color spectrum make skai® Pandoria Plus universally usable.

Product Specification

- Long-lasting
- Tear resistant
- Easy to clean
- Abrasion resistant (DIN EN ISO 5470-2)
- Resistant to oil and fat
- Lightfast
- Disinfectant resistant
- Flame protection
- Biocompatibility: cytotoxicity (EN ISO 10 993-5) and epicutaneous test (EN ISO 10 993-10)
- Resistant to sudor, blood and urine
- Antibacterial according to JIS Z 2801
- Vegan

<i>eyeForce</i>		1800 0000
<i>500 XLE</i>		1500 0006
<i>500 XLE comfort</i>		1500 0006
		+ 3037 0080
<i>500 XLS</i>		1500 0005
<i>500 ECO</i>		1500 0008
<i>400 XL</i>		1400 0001
<i>surgiForce</i>	Formed seat	2600 0008
<i>surgiForce light</i>	Formed seat	2600 0009
<i>surgiLine</i>	Formed seat	2200 0008
<i>assistLine</i>		2400 0015
<i>motionLine</i>		1700 0000
<i>motionLine-E</i>		1700 0001

+ Item No.: 3037 0136
 + Item No.: 3037 0...



The colors displayed on your device may differ slightly from the original colors. If you wish to receive original color charts, please contact us at info@ufsk-osys.com.

Color card
PeriLine



Product Specification

- Without Phthalates
- Biocompatibility: cytotoxicity (EN ISO 10 993-5) and epicutaneous test (EN ISO 10 993-10)
- Urine resistance
- Blood resistance
- Resistance to perspiration
- Resistance to spitting
- Light fastness
- Color fastness to rubbing
- Flame retardant

<i>surgiForce</i>	Comfort seat	2600 0004
<i>surgiForce light</i>	Comfort seat	2600 0006
<i>surgiTrend</i>	Comfort seat	2200 0012
<i>surgiLine</i>	Comfort seat	2200 0013
<i>assistPro F</i>		2400 0005
<i>assistPro H</i>		2400 0009
<i>easyPro F</i>		2400 0010
<i>easyPro R</i>		2400 0013
<i>easyLine F</i>		2400 0020
<i>easyLine R</i>		2400 0022

+ Item No.: 3037 0...

				
kastanie 015817 Item No.:240	light brown 016037 Item No.:239	creme 015812 Item No.:225	weiß 010881 Item No.:224	stein 015813 Item No.:236
				
saphir 015814 Item No.:231	delft 010766 Item No.:241	antistatisch schwarz Item No.:223	schwarz 011499 Item No.:235	anthracit 016046 Item No.:234
				
azur 015815 Item No.:230	aubergine 016041 Item No.:229	lavendel 016042 Item No.:228	rot 010878 Item No.:238	orange 016040 Item No.:237
				
kiwi 015816 Item No.:232	lime green 016043 Item No.:232	lemon 016039 Item No.:226	safran 010879 Item No.:227	

The colors displayed on your device may differ slightly from the original colors. If you wish to receive original color charts, please contact us at info@ufsk-osys.com.

Upgrade your OR to perfection.



eyeForce



500 XLE



500 XLE comfort



500 XLS



500 ECO



400 XL



motionLine



motionLine-E



surgiForce



surgiForce light



surgiTrend



surgiLine



stayClean



stayClean roll



stayClean kick bucket



stayClean collector



assistTrend



assistPro F



assistPro H



easyPro F



easyPro R



easyLine F



easyLine R



assistLine



supportLine

CONTACT US



UFSK
INTERNATIONAL

OSYS

UFSK-International OSYS GmbH
Kirchhoffstraße 1
93055 Regensburg
Germany

Tel. +49 (0) 941 78862 15
Fax +49 (0) 941 78862 35
E-Mail info@ufsk-osys.com
Web ufsk-osys.com

MADE IN GERMANY
Design | Construction | Manufacturing