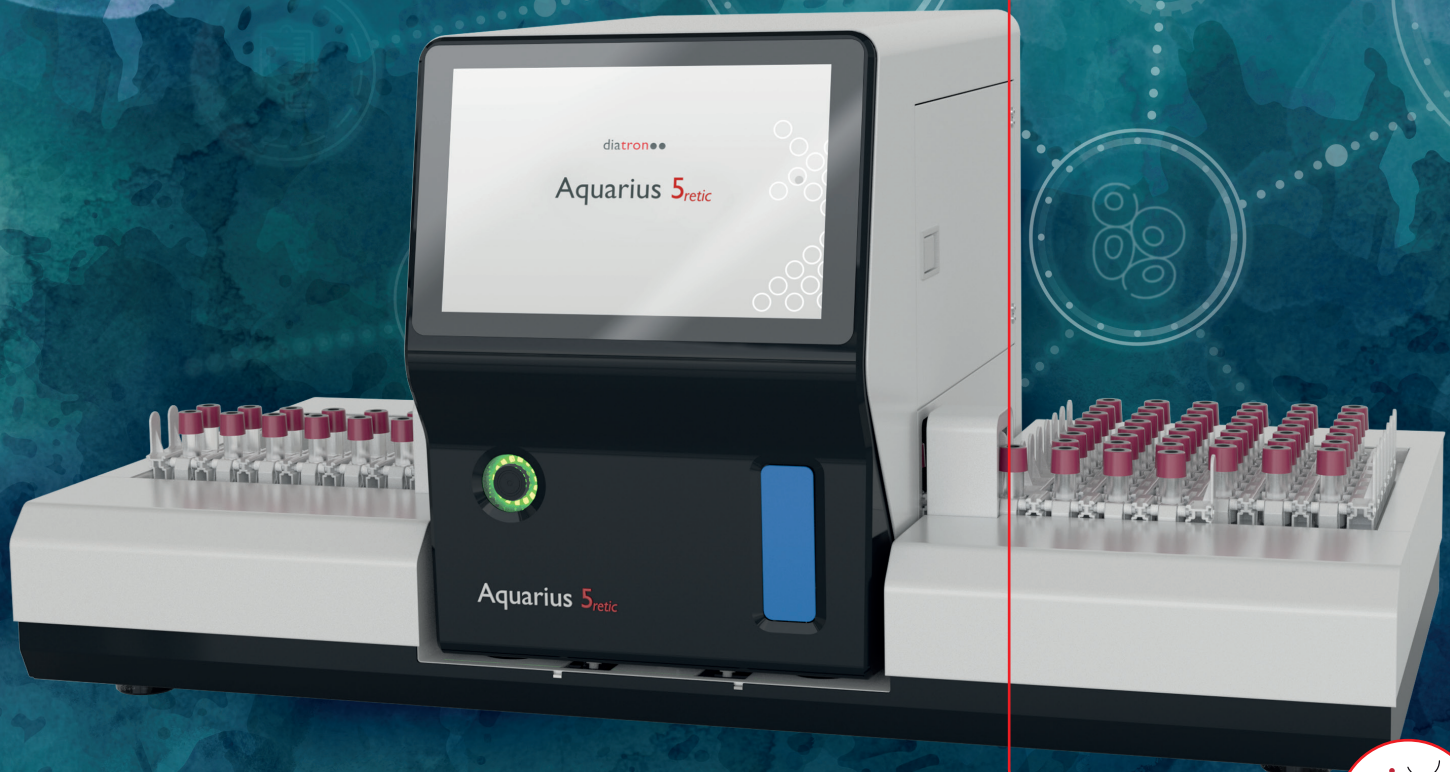


Aquarius 5_{retic}

5-PART WBC DIFFERENTIAL
HEMATOLOGY ANALYZER
WITH RETICULOCYTE



A COMPLETE SYSTEM, COMPACT AND COST-EFFICIENT

The Aquarius 5_{retic} is designed to deliver high quality results and is suitable for use in centralized and de-centralized laboratories. The Aquarius 5_{retic} has a maximum **throughput of 80 tests/hour with the optional autoloader.**

The system is a compact, bench top, 5-part WBC differential analyzer with optional reticulocyte mode and two sampling modes: a cap piercing mode for closed tube sampling and another for open tubes.



Aquarius 5_{retic}

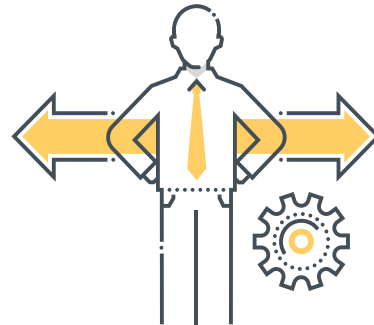
1. PERFECT MEASUREMENTS EVERYTIME

The technology used for the differentiation of WBC and reticulocytes improves sensitivity in the detection of WBC abnormalities and decreases interferences ensuring high result accuracy and precision.



2. CUSTOMIZED SOLUTIONS

The optional autosampler with its continuous loading capability makes the Aquarius 5_{retic} a true walk-away system, ensuring timely clinical decisions in both the human and veterinary markets.



3. SMART REAGENT PACK FOR COST CONTAINMENT

A closed reagent pack for CBC DIFF and reticulocytes features low reagent consumption (<30ml), improved ease of use and better inventory control.



SPECIFICATIONS

- 24 parameters: WBC, RBC, HGB, HCT, MCHC, MCH, MCV, PLT, RDW-SD, RDW-CV, MPV, PDW, P-LCR, PCT, NEUT%, MONO%, EO%, BASO%, LYMPH%, NEUT#, MONO#, EO#, BASO#, LYMPH#, 2 histograms: RBC, PLT, 2 Scattergrams: DIFF, RET + optional reticulocyte profile
- 80 tests/h throughput
- Micro tube support in open and close mode using
- Low sample volume <40µl
- Reagent consumption is <30ml
- Only two reagents for CBC+DIFF and on-board reticulocyte dye
- Multi-dimensional scatter analysis
- HL7 support
- USB, network printing printer
- Small and compact cap piercing 5-part + retics with advanced flagging
- Reticulocyte measurement utilising New Methylene Blue reagent
- Extended linearity range for WBC, RBC, HgB, PLT
- Modern, easy-to-use GUI (Common with Aquila)
- Secure operating system (WIN 10)
- Capacitive touchscreen
- Multi-user security features- allowing user set options/rights
- Expected size: 26.6 cm (W) x 45 cm (D) x 38 cm (H)
- Expected weight: 25 kg without autoloader

CONTINUOUS LOADING RACK SYSTEM AUTOLOADER

- Can be loaded and unloaded during operation
- Individually identifiable racks
- Integrated sample mixing and barcode reading
- STAT mode

diatron●●

We are a member of the STRATEC Group | www.diatron.com | sales@diatron.com

The herein provided information and specifications by DIATRON are provided on an "as-is" basis and may be subject to changes, omissions and errors. DIATRON shall have no liability for the accuracy and completeness of these information and specifications and cannot be held liable for any representations or warranties, expressed or implied, and any third party claims or losses of any damages thereof. DIATRON reserves the right to make any changes to the information and specifications at any time and without notice. The applications and products herein may not be available in all markets | Nr.A5D21 | I05V2