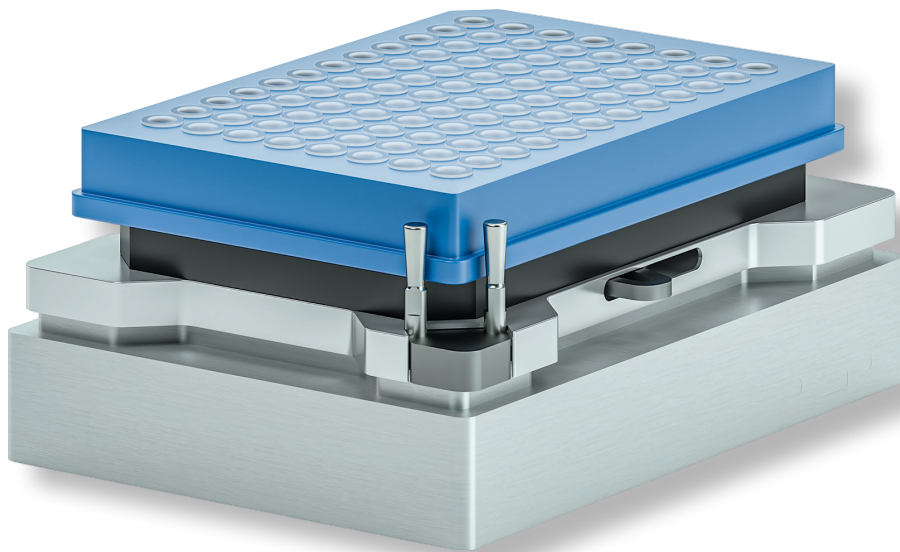


Shaking



Teleshake and Teleshake AC

Flexible, wide-range non-heated shaking solutions

Premium shaking devices

Small footprint & very compact design for robotics integration

Teleshake

Product description

The Teleshake has a very compact and low-profile design with a height of only 39. The small footprint makes it ideal for integration into automation platforms. Plates with up to 384 wells can be used on the Teleshake have a precise automated zero positioning (centric position precision: ± 0.1 mm) that allows a comfortable robotic gripping. Plates are securely fixed during shaking with a mechanism that is easily adaptable for different plates. Shaking frequency 100-2,000 rpm and shaking pattern (linear & orbital) is comfortably adjusted. A low-speed startup process prevents spillage. The Teleshakes are high performance plug-and-play shaking devices that can be operated in standalone with a control module, or with a PC via RS232 interface.

Daisy-chaining of up to 14 instruments is possible.

The maximum shaking frequency depends on the selected amplitude and the total weight of loaded plate and liquid volume. At a given load, higher maximum shaking frequencies can be used with the 2mm amplitude shaker. Whether a higher shaking frequency or a higher amplitude is needed for the liquid in your assay needs to be tested. The minimal frequency that can be used is 100 rpm. The maximum load of 500 g should not be exceeded.

Benefits

- Secure & flexible plate fixation
- Ideal frequency for 96 & 384 plate
- Also for vials, reservoirs & troughs
- Shaking speed: 100 to 2,000 rpm
- Orbital or linear shaking
- Amplitude 2 or 3 mm
- Central zero self-positioning
- Frequency infinitely selectable



3800047 Teleshake & Accessories

Product	PartNo.	Tubes wells	RMP	Amplitude	Dimensions W x D x H (mm)
Teleshake 230 V EU	3800047	1-384	100 - 2,000	2 mm	103 x 146 x 39
Teleshake 115 V US	3800048	1-384	100 - 2,000	2 mm	
Teleshake 230 V UK	3800049	1-384	100 - 2,000	2 mm	
Teleshake 100 V JP	3800050	1-384	100 - 2,000	2 mm	
Teleshake 230 V EU	3800063	1-384	100 - 2,000	3 mm	
Teleshake 115 V US	3800064	1-384	100 - 2,000	3 mm	
Monoshake 115V	3800080	1-384	100 - 2,000	2 mm	103 x 146 x 40

* Each shaker includes a control module (power supply & RPM control). Further country specific & OEM versions available.

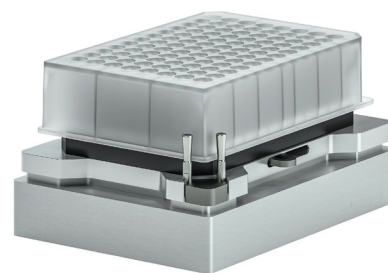
Teleshake AC

The new Teleshake AC is one of the most compact shakers available with a very low profile. The automated labware clamping mechanism increases process reliability and facilitates the use of a wide variety of disposables, such as standard ANSI/SLAS plate formats, or other reagent containers or tubes. The clamping enables piercing of sealed labware, or shaking of disposables with lids with the use of exchangeable customized clamping pins.

The Teleshake AC is equipped with a strong shaker motor directly driving the shaker plate. This results in high shaking frequencies up to 3,000 rpm and higher load capacity of 500 g over the whole frequency range.

The automated zero positioning allows a comfortable robotic gripping and a low-speed startup process prevents spillage.

For single Teleshake AC units, the power supply and temperature setting/control is performed through the INHECO Single TEC Control unit (STC). For multiple (up to six) INHECO heating & cooling units – incl. Teleshake AC – an INHECO Multi TEC Control unit (MTC, with display) or MTC Compact (no display) is used and each device is controlled individually. A yellow slot module is required to connect the Teleshake AC to the STC/MTC.



Teleshake AC

Product	Part No.	Dimensions W x D x H (mm)	RPM	Amplitude
Teleshake AC	7100151	101 x 144 x 47	200 - 3,000	2 mm

Alternatives

For the heated and cooled shaker units, we refer to the heating & shaking (Teleshake 95 & Teleshake 95 AC) and heating, cooling, shaking (Thermoshake & Thermoshake AC) brochures.

Verification plate

INHECO offers a compact and precise measurement plate (IMP) in ANSI/SLAS (formerly SBS) format for verification of temperature and/or shaking performance. The IMP can be used on heating, cooling, shaking devices and inside incubation chambers. We refer to the IMP brochure for more information.



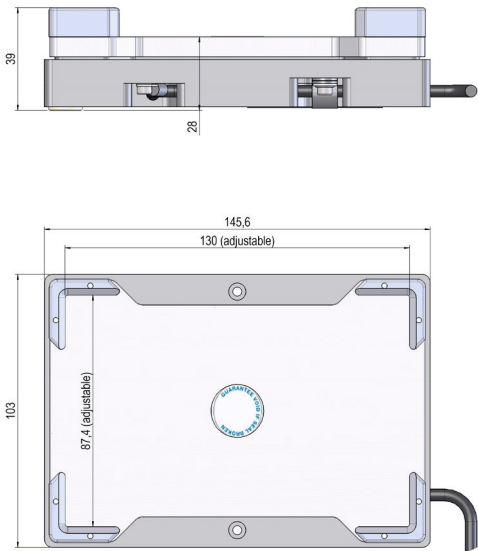
7100146 Thermoshake Classic (back)
7100160 Thermoshake AC (front)

Product	Part No.	Dimensions W x D x H (mm)	Weight	Temperature range
IMP	7901000	87.5 x 128 x 14.9	100 g	4 °C to 60 °C

Visit us on www.inheco.com

Drawings

Teleshake



Teleshake AC

