



## ZEN Knee fixed bearing

**BEST QUALITY**  
 MADE IN GERMANY

### ZEN KNEE – FIXED BEARING

#### For a cemented, cementless or hybrid implantation

The ZEN Knee fixed bearing system is a surface replacement for cemented, cementless or hybrid use. It consists of four components, which are available in several variations: a femoral component, an insert, a tibial and a patellar component.

The ZEN Knee fixed bearing implants are tri-compartmental non-constrained prostheses for posterior cruciate ligament (PCL) sparing or PCL and anterior cruciate ligament (ACL) sacrificing primary total knee arthroplasty (TKA).

The shape and dimensions of the ZEN Knee implants are based around the natural anatomy of the knee and are designed for a bone-friendly surgical technique. Each component is available in six sizes to adapt to the

individual conditions of each patient. The range of motion in flexion is more than 110° when using an ultra-congruent insert. The standard inserts allow an even greater range of motion. The UHMWPE patella components include an implant steel pin (ISO 5832-1) for better visualization of imaging procedures.

The anatomically shaped tibial plateau allows very good cortical coverage of the proximal tibia and is also available in left and right versions. Cemented and a cementless components are available. In addition, the cemented version is also available with a titanium-niobium-nitride coating with reduced allergy potential. The trochlea groove is designed for a bone-saving surgical technique.



PRODUCT DESCRIPTION

- **Sizes:**  
6 sizes
- **Anchoring:**  
cemented  
cementless or hybrid
- **Components & Material:**  
**Femur and Tibia**  
 cemented: CoCrMo  
                   opt. with TiNbn coating  
 cementless: CoCrMo with TPS &  
                   BONIT® coating  
**PE insert**  
 UHMWPE: STD  
 Vitamin E XL-PE: STD, UC
- Patella**  
 cemented: *mobile*: CoCrMo &  
                   UHMWPE,  
                   opt. TiNbn coating  
                   *fix*: UHMWPE  
 cementless: *mobile*: CoCrMo with  
                   TPS & BONIT® coating  
                   & UHMWPE

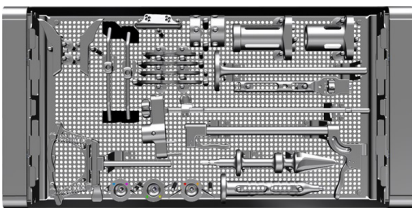
INSTRUMENTS

All instruments are characterized by simple modes of action and their functions are immediately identifiable. The instruments make it possible to verify the individual surgical steps as they are being performed and to revert to a reliable baseline after every step. The design of the instruments is

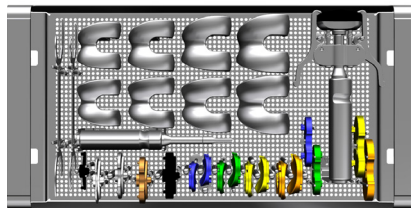
also very appealing as it incorporates a high level of user friendliness and facilitates easy and fast use.

Ergonomic silicone handles ensure that they are easy to handle. In addition, the instruments are designed in such a way that only the parts that

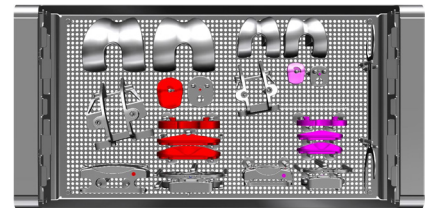
belong together actually fit together. The entire set of instruments is supplied in six Monolite trays that are made in one piece from high quality stainless steel. The system is characterized by its light weight and can be stacked as desired.



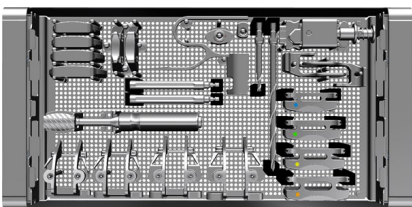
Tray Tibia



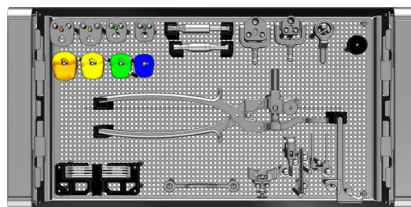
Tray Trial Components



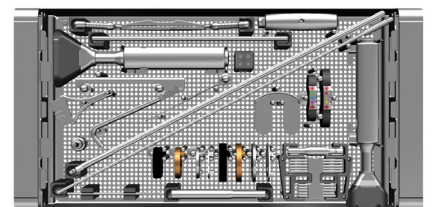
Tray Size 1 & 6



Tray Femur



Tray Patella



Tray General

