

## Müller Straight Stem

**BEST QUALITY**  
  
MADE IN GERMANY

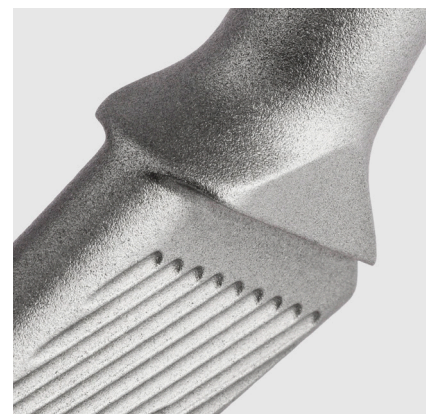
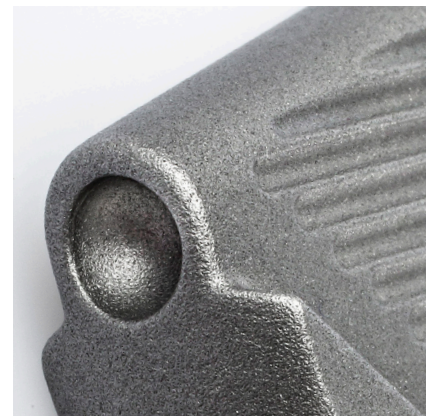
### MÜLLER STRAIGHT STEM

#### For a cemented anchoring in the femur

Over decades, the Müller Straight Stem has been safely used as a hip endoprosthesis for cemented fixation in the femur and is one of the most commonly used cemented implants worldwide. Made of CoCrMo casting alloy (ISO 5832-4) and fitted with a 12/14 cone, the Müller Straight Stem can be combined with both metal and ceramic femoral heads. One standard and one lateral version, each in 11 different sizes, are available. The stems differ from one another in terms of length and offset. At 135°, the CCD angle is identical for all stems. The fine groove structure facilitates good adhesion of the cement. Optional cement stoppers limit the depth of the cement. Depressions to facilitate insertion ensure ease of handling.

The fine structure of the surface of the implant increases the surface area

and optimises anchoring with bone cement. The modular design of the system allows for optimal individual care of patients, also at an advanced age. The Müller Straight Stem provides primary stability when the joint is under stress, especially in “softer” bones, thus enabling early mobilisation of the patient. It also covers a wide range of indications and can be used for nearly all primary surgical interventions and also for many revisions.



## PRODUCT DESCRIPTION

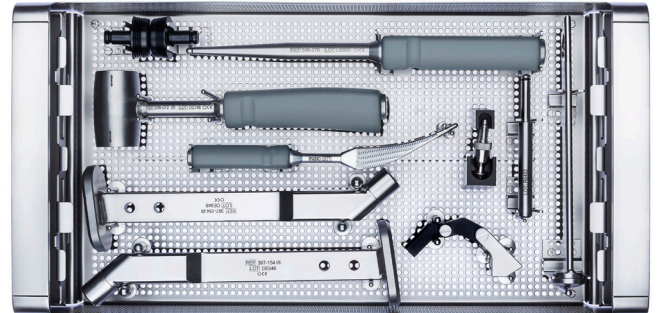
- Anchoring: cemented
- Material: CoCrMo (ISO 5832-4)
- Cone: 12/14
- Combinable with: Metal and ceramic femoral heads
- Variant: Standard and Lateral  
CCD angle: 135°
- Sizes: 11 sizes

## INSTRUMENTS

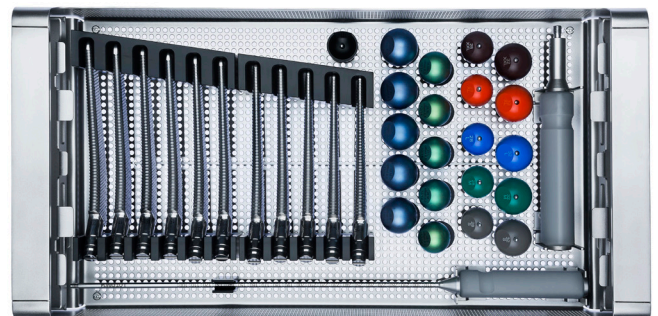
The Müller Straight Stem covers a wide range of indications. It can be used for nearly all primary surgical treatments and also for many revisions. Implantation requires only a handful of basic instruments. The universal instrument set enables a smooth switch from the standard to the lateralized version during surgery.

The rasps are made of premium-grade hardened stainless steels. They are CNC ground and subsequently plasma-polished. This makes the instruments particularly durable and facilitates easy preparation.

Both the basic instrument set and the rasp instrument set can be supplied in our Monolite trays. The instrument trays are crafted out of a single piece from high quality stainless steel. The system is characterised by its light weight and can be stacked as desired.



Basic Instrument Set Müller Straight Stem



Rasp Instrument Set Müller Straight Stem

