

Turnkey

INTEGROMED
Integrated Medical Solutions



Innovative Ideas
For Complex
Healthcare Facilities.

Zimmerstr. 1 | 04109 Leipzig |
+49 341 2222 98 0 | www.integromed.de

We offer from Inception to Reality

INTERGROMED relies on tens years of experience in the healthcare sector, extraordinary engineering experiences and capabilities supported by long-term successful relations with world wide suppliers. INTERGROMED acts as full facility scope provider starting from concept to after sales services.

Integrated Solution Values

Customer Satisfaction

Safely turning your dreams into reality within the available resources.

Project Success

Professional experience appears in accurate conditions studies that guarantee project success.

Expertise Vision

Design validation, medical planning and equipment selection would not be easier without the expertise vision.

Risks Mitigation

Early prediction of the financial, safety and ignorance factors bases on deep market knowledge.

Cost Effectiveness

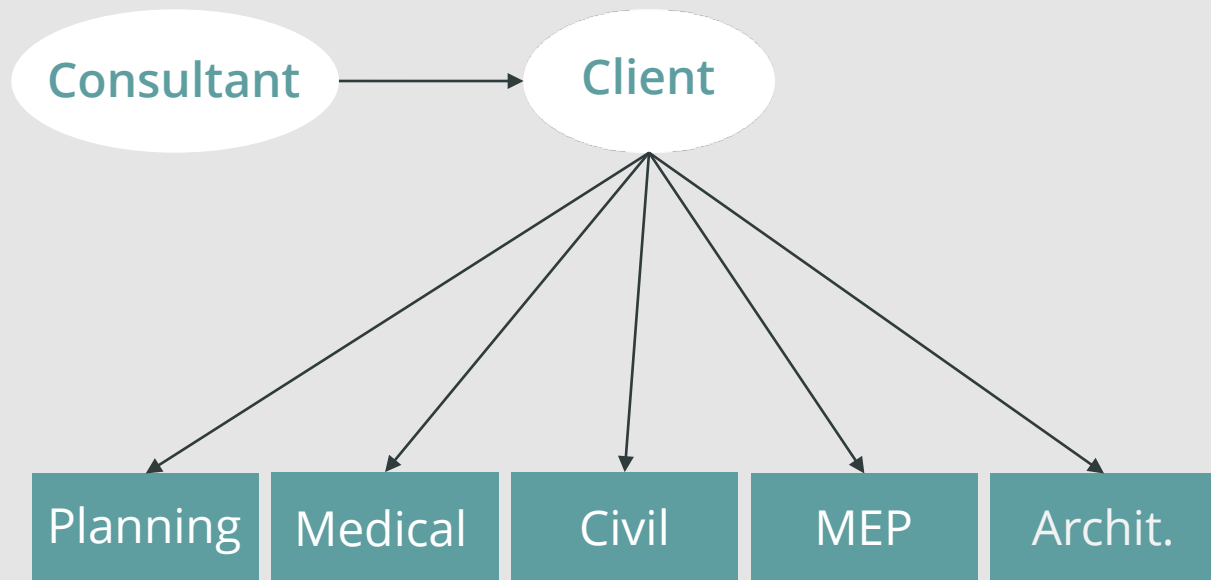
Selection of functionally qualitative equipment to support the exact needed application.

Save Time = Save Money

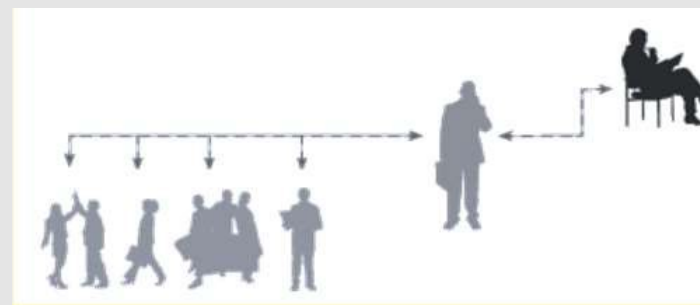
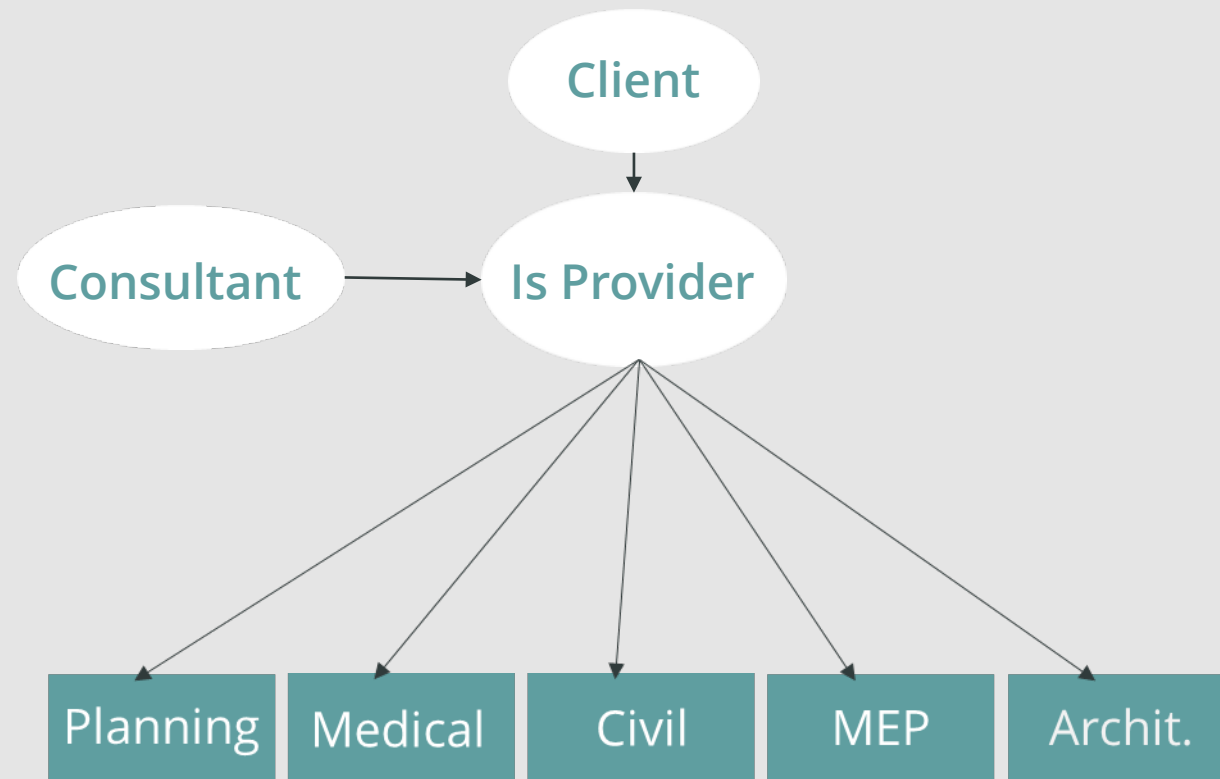
Plan/Control/Monitor project time frame starting from concept till delivery.

Conventional to Integrated Solution Project

Comparisons Show Truth



Conventional Project Model



Integration Solution Project Model

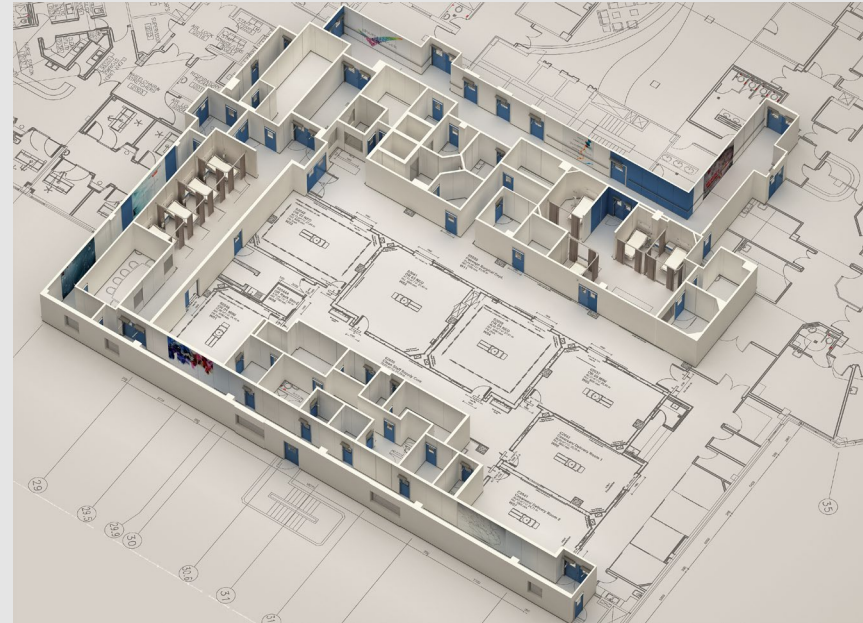
Our Offer

- ✓ Design and Consultancy
- ✓ Project Management
- ✓ Electromechanical System
- ✓ Logistics Handling
- ✓ Medical Supplies
- ✓ Operation and Training
- ✓ After Sales Services

INTERGROMED acts as full facility scope provider starting from concept to after sales services.

Design and Consultancy

- Architectural Design
- Interior Design
- Structural & Civil Design and Building Safety
- Design Review and Coordination
- Value Engineering
- Facility Assessment and Due Diligence
- Medical Planning
- Pre-Installation Requirements



Project Management

- Client Representation
- Scope Management
- Pre-qualification, Selection and Appointment of Design Consultants
- Project Budget Prediction and Cost Control
- Planning and Scheduling
- Tender Management
- Design Management
- Construction Management
- Contract Administration



Electromechanical Systems

- Nurse Call System
- Fire Protection System
- Medical Gases System
- Electrical System
- Plumbing System
- HVAC System
- Building and Energy Management System Design
- IT Systems Integration with Medical Planning
- Networking



Logistics Handling

- Strict Compliance with Local Environmental, Labor, Legal, Financial Regulations
- Full Handling of goods Cycle Starting from shipping to allocation to specified destination including:
 - Documentation Control
 - Goods Releasing
 - Transporting
 - Inventorying Conditions and on site Distribution



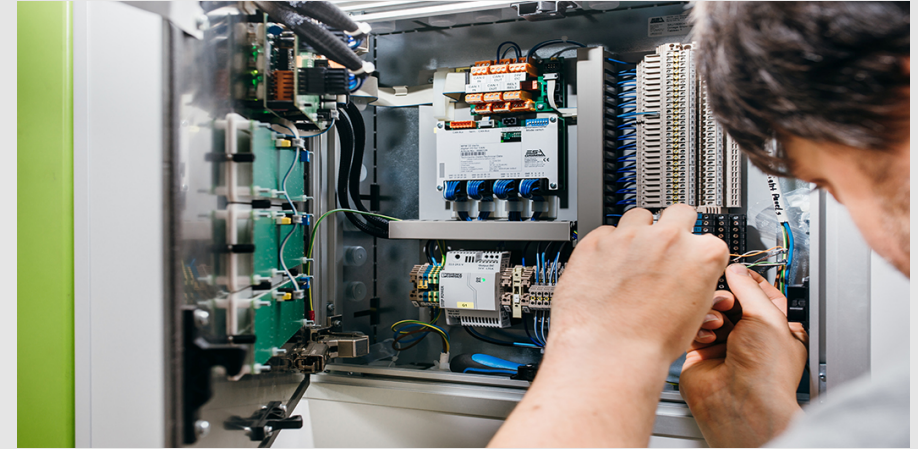
Medical Supplies

- Applying cutting edge equipment with state of the art technology
- Translate the customer needs to touchable configurations
- Site Pre-Installations supervision and follow up till readiness for installation
- Deliver full functional equipment considering value efficiency
- Medical equipment allocation as per standards



Operation and Training

- Control and monitor the Installation/Operation Schedule
- Highly trained, qualified and certified 250 technicians supervised by more than 30 specialized engineers
- On-Site and overseas training



After Sales Services

- Working Hand-In-Glove with the suppliers to deliver fulfillment services during the warranty period
- Support full maintenance period
- Support full maintenance facility
- Restlessly improving upon what we have already launched
- Close contact with the customers, collecting VOCs to guarantee full satisfaction



Your Added Value

- ✓ One-Stop-Shop
- ✓ Consultancy Services
- ✓ Medical Planning and Design Validation
- ✓ Project Management
- ✓ Financial Supervision
- ✓ Advanced Training for medical staff
- ✓ 25 years of experience in turnkey

For more Information contact us:

Tel: +49 341 2222 98 0

Email :sales@integromed.de

info@integromed.de

