



# *surgiLine*

SURGEON'S CHAIR



E

2024 V03

ENJOY QUALITY AND DESIGN

# surgiLine

Item No.: 2200 0008 with Formed seat (Illustration)  
 Item No.: 2200 0013 with Comfort seat

The quintessential timeless surgeon chair for microsurgery. The *surgiLine* is a tried and tested classic and a reliable partner in the operating room. It has a rugged steel frame yet is easy to maneuver thanks to its high-grade double castors. The seat and backrest are height-adjustable and promote a healthy sitting posture thanks to *surgiLine's* special lumbar support. The armrests can be individually adjusted for each surgeon. Available in two seating system types: Formed seat or Comfort.



## Seating systems

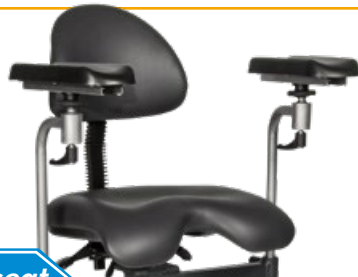


Seat angle adjustment

Back angle adjustment

Back height adjustment

Upholstery/color card



Formed seat



Formed seat

Standard color  
 anthracite  
 Item No.: 3037 0052



„skai® Tundra“ page 96  
 „skai® Pandora Plus“ page 97



Comfort

Seat angle adjustment

Back angle adjustment

Back height adjustment

Standard color  
 black  
 Item No.: 3037 0235



„PeriLine“ page 99

Comfort

## Armrests

- Stable, ergonomically shaped armrests with curved support surface (350 x 120 mm)
- Height-adjustable and equipped with a ball joint for 360-degree rotation
- Designed for personalized adjustment to the surgeon
- Optionally available with one-hand release
- Optionally available with linear guide and one-hand release



## Chassis

- Powder-coated tubular steel frame with sanitary, scratch-resistant high-shine plastic cover panels
- 4 high-quality, smooth-running double castors
- Central braking system effective on 4 castors
- Integrated foot keypad panel for seat height adjustment
- Power supply-independent battery box with emergency stop button



## Technical specifications

### Lifting column

- Drive 3,000 N (IPX4)
- Lifting height 200 mm

### Chassis

- L x W (incl. braking system/foot keypad) 640 x 600 mm
- Castors ø 100 mm
- Central brake acting on all four castors
- Emergency stop button

### Battery unit

- Battery box with 2 batteries (lead-gel), pollution free, maintenance-free, cadmium-free 2 x 12 V, 7.2 Ah
- Universal battery charger: Input: 100 – 240 V  
Output: 30 V

### Seating systems:

### Formed seat | Comfort

- Min. sitting height 530 mm | 550 mm
- Max. sitting height 730 mm | 750 mm
- Seat angle adjustments -5°/+6° | -5°/+5°
- Back angle adjustments -18°/+5° | -25°/+5°

### Weight

45 kg

### Max. load

150 kg

Subject to technical modifications.

## Technical dimensions

### Seating system Formed seat

#### Minimum



Specifications in mm

#### Maximum



### Seating system Comfort

#### Minimum



#### Maximum



# Components



**surgiTrend**  
Dynamic seat Item No.: 2200 0010



**surgiTrend**  
Comfort seat Item No.: 2200 0012



**surgiLine**  
Formed seat Item No.: 2200 0008

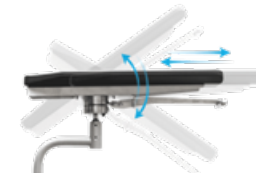


**surgiLine**  
Comfort seat Item No.: 2200 0013



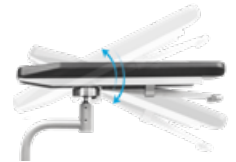
Backup battery

Item No.: 3047 0000



Armrest pair with linear guide and one-hand release, factory-fitted

Item No.: 3351 1006



Armrest pair with one-hand release, factory-fitted

Item No.: 3351 1004



**surgiTrend**  
Footswitch plate  
480x715 mm, height 53 mm

Item No.: 3351 1011



**surgiLine**  
Footswitch plate  
480x715 mm, height 53 mm

Item No.: 3351 0014



UNIVERSITÄTSKLINIKUM ESSEN (Essen, DE)

Color card  
**skai® Tundra**



High quality skai® material with fine calf leather grain and subdued matte-gloss-effect. The very extensive and trend-orientated color spectrum enables many applications and combinations.

**Product Specification**

- Long-lasting
- Tear resistant
- Easy to clean
- Abrasion resistant (DIN EN ISO 6570-2)
- Lightfast
- Disinfectant resistant
- Biocompatibility: cytotoxicity (EN ISO 10 993-5) and epicutaneous test (EN ISO 10 993-10)
- Blood- and urine resistant
- Phthalate-free
- Vegan

<i>eyeForce</i>		1800 0000
<i>500 XLE</i>		1500 0006
<i>500 XLE comfort</i>		1500 0006
		+ 3037 0080
<i>500 XLS</i>		1500 0005
<i>500 ECO</i>		1500 0008
<i>400 XL</i>		1400 0001
<i>surgiForce</i>	Formed seat	2600 0008
<i>surgiForce light</i>	Formed seat	2600 0009
<i>surgiLine</i>	Formed seat	2200 0008
<i>assistLine</i>		2400 0015
<i>motionLine</i>		1700 0000
<i>motionLine-E</i>		1700 0001

+ Item No.: 3037 0...

weiß F6461198 Item No.: .....134	creme F6461210 Item No.: .....057	beige F6461636 Item No.: .....094	sand F6461230 Item No.: .....058	pistazio F6461610 Item No.: .....153	mint F6461495 Item No.: .....067	aqua F6461456 Item No.: .....001	türkis F6461338 Item No.: .....008
perle F6461288 Item No.: .....007	silber F6461550 Item No.: .....070	stone F6461608 Item No.: .....075	bleu F6461496 Item No.: .....068	dolphin F6461609 Item No.: .....076	sky F6461581 Item No.: .....073	royal F6461196 Item No.: .....051	atoll F6461453 Item No.: .....062
violett F6461356 Item No.: .....059	cyclame F6461381 Item No.: .....119	orchidee F6461354 Item No.: .....011	bordeaux F6461350 Item No.: .....010	kirsche F6461199 Item No.: .....054	feuer F6461454 Item No.: .....063	karneol F6461557 Item No.: .....072	orange F6461556 Item No.: .....071
apricot F6461458 Item No.: .....066	mais F6461457 Item No.: .....065	mango F6461607 Item No.: .....074	safran F6461542 Item No.: .....069	limonade F6461343 Item No.: .....009	limone F6461543 Item No.: .....109	smaragd F6461455 Item No.: .....064	agave F6461273 Item No.: .....006
chrom F6461205 Item No.: .....056	ocean F6461204 Item No.: .....055	schoko F6461357 Item No.: .....060	schwarz F6461195 Item No.: .....050	anthrazit F6461197 Item No.: .....052			

The colors displayed on your device may differ slightly from the original colors. If you wish to receive original color charts, please contact us at [info@ufsk-osys.com](mailto:info@ufsk-osys.com).

Color card

# skai® Pandoria Plus



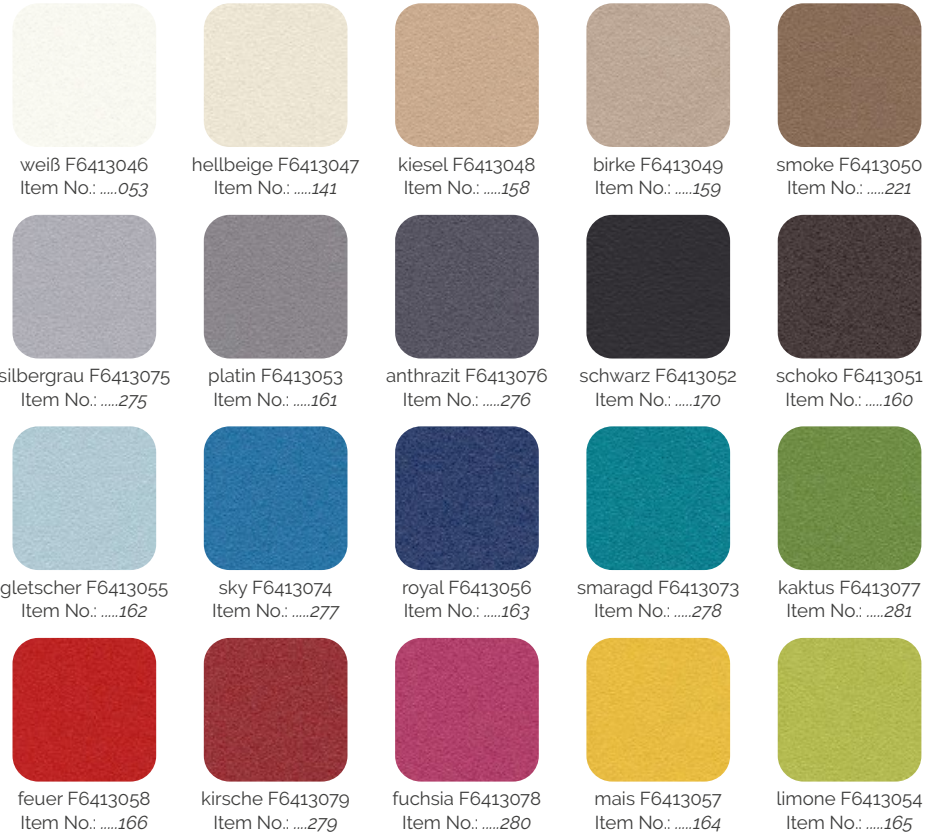
skai® Pandoria Plus is a high-quality upholstery material, whose fine micropore structure gives a certain unobtrusiveness, which is refined by an attractive tone-in-tone effect. The very pleasant feel of the material and the excellent material characteristic and the broad, modern color spectrum make skai® Pandoria Plus universally usable.

### Product Specification

- Long-lasting
- Tear resistant
- Easy to clean
- Abrasion resistant (DIN EN ISO 5470-2)
- Resistant to oil and fat
- Lightfast
- Disinfectant resistant
- Flame protection
- Biocompatibility: cytotoxicity (EN ISO 10 993-5) and epicutaneous test (EN ISO 10 993-10)
- Resistant to sudor, blood and urine
- Antibacterial according to JIS Z 2801
- Vegan

<i>eyeForce</i>		1800 0000
<i>500 XLE</i>		1500 0006
<i>500 XLE comfort</i>		1500 0006
		+ 3037 0080
<i>500 XLS</i>		1500 0005
<i>500 ECO</i>		1500 0008
<i>400 XL</i>		1400 0001
<i>surgiForce</i>	Formed seat	2600 0008
<i>surgiForce light</i>	Formed seat	2600 0009
<i>surgiLine</i>	Formed seat	2200 0008
<i>assistLine</i>		2400 0015
<i>motionLine</i>		1700 0000
<i>motionLine-E</i>		1700 0001

+ Item No.: 3037 0136  
 + Item No.: 3037 0...



The colors displayed on your device may differ slightly from the original colors. If you wish to receive original color charts, please contact us at [info@ufsk-osys.com](mailto:info@ufsk-osys.com).

Color card  
**PeriLine**



**Product Specification**

- Without Phthalates
- Biocompatibility: cytotoxicity (EN ISO 10 993-5) and epicutaneous test (EN ISO 10 993-10)
- Urine resistance
- Blood resistance
- Resistance to perspiration
- Resistance to spitting
- Light fastness
- Color fastness to rubbing
- Flame retardant

<i>surgiForce</i>	Comfort seat	2600 0004
<i>surgiForce light</i>	Comfort seat	2600 0006
<i>surgiTrend</i>	Comfort seat	2200 0012
<i>surgiLine</i>	Comfort seat	2200 0013
<i>assistPro F</i>		2400 0005
<i>assistPro H</i>		2400 0009
<i>easyPro F</i>		2400 0010
<i>easyPro R</i>		2400 0013
<i>easyLine F</i>		2400 0020
<i>easyLine R</i>		2400 0022

+ Item No.: 3037 0...

kastanie 015817 Item No.: .....240	light brown 016037 Item No.: .....239	creme 015812 Item No.: .....225	weiß 010881 Item No.: .....224	stein 015813 Item No.: .....236
saphir 015814 Item No.: .....231	delft 010766 Item No.: .....241	antistatisch schwarz Item No.: .....223	schwarz 011499 Item No.: .....235	anthracit 016046 Item No.: .....234
azur 015815 Item No.: .....230	aubergine 016041 Item No.: .....229	lavendel 016042 Item No.: .....228	rot 010878 Item No.: .....238	orange 016040 Item No.: .....237
kiwi 015816 Item No.: .....232	lime green 016043 Item No.: .....232	lemon 016039 Item No.: .....226	safran 010879 Item No.: .....227	

The colors displayed on your device may differ slightly from the original colors. If you wish to receive original color charts, please contact us at [info@ufsk-osys.com](mailto:info@ufsk-osys.com).



# Upgrade your OR to perfection.



*eyeForce*



*500 XLE*



*500 XLE comfort*



*500 XLS*



*500 ECO*



*400 XL*



*motionLine*



*motionLine-E*



*surgiForce*



*surgiForce light*



*surgiTrend*



*surgiLine*



*stayClean*



*stayClean roll*



*stayClean kick bucket*



*stayClean collector*



*assistTrend*



*assistPro F*



*assistPro H*



*easyPro F*



*easyPro R*



*easyLine F*



*easyLine R*



*assistLine*



*supportLine*

## CONTACT US



**UFSK**  
INTERNATIONAL

**OSYS**

UFSK-International OSYS GmbH  
Kirchhoffstraße 1  
93055 Regensburg  
Germany

Tel. +49 (0) 941 78862 15  
Fax +49 (0) 941 78862 35  
E-Mail [info@ufsk-osys.com](mailto:info@ufsk-osys.com)  
Web [ufsk-osys.com](http://ufsk-osys.com)

**MADE IN GERMANY**  
Design | Construction | Manufacturing