

EXCELLENCE IN ANALYTICAL SYSTEMS



EXIAS Medical, a company founded in Austria in 2014, develops analyzers in the point-of-care and laboratory field.

Combined with the spirit of a dynamic start-up company, the long-term experience in the IVD market allows EXIAS Medical to address the needs of healthcare professionals worldwide.

At EXIAS Medical we achieve ideal solutions for customers via technical excellency and innovation.

e 1 ELECTROLYTE ANALYZER



© 2021 EXIAS Medical GmbH
All rights reserved

Kratkystraße 2
8020 Graz, Austria

info@exias-medical.com
www.exias-medical.com

25 s

20 µL

oQC



The **EXIAS e|1 Analyzer** is an electrolyte system intended for in-vitro measurements of **Na⁺, K⁺, Cl⁻, Ca²⁺** as well as **pH** and **Hct**, in whole blood, serum and plasma.

The system uses an **all-in-one cartridge** that enables a **maintenance free** operation. Technical excellence and an innovative **thick-film sensor** technology lead to exceptional operational performance.

Robust and clever design with a compact footprint makes the **e|1 Analyzer** well suited for both **point-of-care** and **laboratory** environment.

7" Touch display

Sample input unit



Ease of use

- Intuitive user interface
- Versatile sample input for sample tubes, capillaries and syringes; application without adapters

Built-in thermal printer

easy-load

Full connectivity

- Data exchange with LIS acc. LIS2-A2 protocol (ASTM)
- Network connection via LAN (RJ45) or WiFi dongle (optional)
- Export of data to USB flash drive (results, settings, etc.)
- Barcode reader (optional)



25 s

Shortest time to result on the market

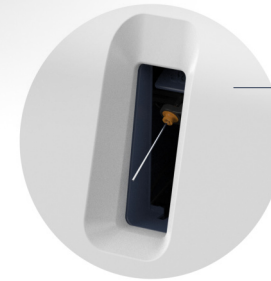
20 µL

Lowest sample volume on the market

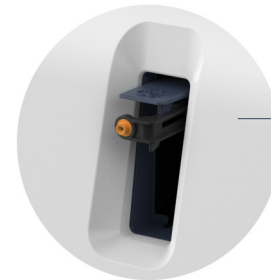
oQC

Fully programmable automated 3 level on-board QC

Syringe/ Sample tube mode



Capillary mode



Maintenance free

- All-in-one cartridge includes
- sensors, solutions, waste and quality controls (optional)
 - all wear & tear parts like tubings, sample input, valves etc.



PERFORMANCE CHARACTERISTICS

- | | |
|----------------------|---|
| • Parameters | Na ⁺ , K ⁺ , Cl ⁻ , Ca ²⁺ , pH, Hct |
| • Time to result | 25 s |
| • Min. sample volume | 20 µL |
| • Sample type | whole blood, serum, plasma |

OPERATIONAL CHARACTERISTICS

- | | |
|------------------------|---|
| • All-in-one cartridge | 600 samples / 28 days
300 samples / 28 days
150 samples / 28 days
optional: on-board QC (3 levels) |
| • Sample container | sample tubes, capillaries, syringes (no adapters required) |
| • Calibration time | 35 s for automatic 2-point cal |
| • Touch display | 7" / 800 x 480 px |
| • Dimensions | 20 x 31 x 28 cm (W x H x D) |